



**American Red Cross**

of Greater Cleveland  
3747 Euclid Avenue  
Cleveland, Ohio 44115-2596

NONPROFIT ORG  
U.S. POSTAGE  
**PAID**  
CLEVELAND, OH  
PERMIT #3358

**BUSINESS  
EMERGENCY  
PLANNING  
ASSOCIATION**



Register today at: <http://bepaconference08.eventbrite.com>,

visit [www.redcross-cleveland.org](http://www.redcross-cleveland.org) and click on "BEPA" or call Ann Gynn at 216.235.4566.

**3:00 p.m. – 4:00 p.m.**

**TRACK D1**

**Security in the Aftermath of Crisis**

**Tom Lekan, Atlantis Security Management Co.**

Are you really ready to deal with a major crisis or incident?  
Are your plans easy to implement and flexible?  
What happens if the crisis is a terrorist act?  
Some lessons learned first hand

**TRACK D2**

**Are You Really Ready to Help In a Disaster?**

**Assumptions vs. Realities**

**Kris Putnam Walkerly, Putnam Community Investment Consulting**

In this session you will learn about the assumptions versus the realities of philanthropy's role in disaster relief. You will come away with valuable knowledge to prepare and implement an effective disaster plan and learn the steps you must take to ensure your funds are available and can be distributed when needed. Participants will learn operational and useful ways to help any community in the event of a disaster. This session is designed for foundation and non-profit managers and planners who are responsible for delivery of funds, programs and long-range planning and implementation of programs and initiatives.

**TRACK D3**

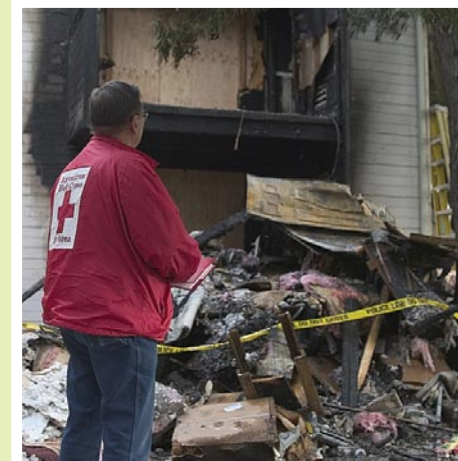
**Looking at Security From the Outside In—Security For Your Network, Data, Clients and Businesses**

**Neal Alexander, National Premier Protective Services  
Michael Mondato, System Care Inc.**

In the aftermath of 9-11, our country is in a constant state of alert. In order to protect your company's assets and employees and to provide a safe work environment to attract employees, organizations should provide an annual security audit. In addition, the electronic security industry is constantly developing new and emerging equipment that organizations can utilize to provide a secure environment, secure their assets and monitor and review their facilities. In this presentation, we will look at the threats, evaluations and some of the newest electronic security offerings available.

# BUSINESS CONTINUITY THE 10th ANNUAL CONFERENCE

**NEW DATES:  
AUGUST 14 & 15**



**NEW DATES: AUGUST 14 & 15, 2008**

Hawthorne Valley Country Club

27840 Aurora Road

Solon, Ohio

[www.bepaconference08.eventbrite.com](http://www.bepaconference08.eventbrite.com)

**BUSINESS  
EMERGENCY  
PLANNING  
ASSOCIATION**



Sponsors as of May 28, 2008



**PUBLIC SAFETY  
TRAINING INSTITUTE**  
CUYAHOGA COMMUNITY COLLEGE



EMERGENCY  
MANAGEMENT AGENCY



Cleveland Cavaliers



**WHEN:** Thursday, August 14 and Friday, August 15

**WHERE:** Hawthorne Valley Country Club 27840 Aurora Rd, Solon, Ohio 44139

**ADVANCE REGISTRATION COST:** \$275 per person; \$250 for supporting organizations members; \$225 for BEPA members

**OPTIONS:** Golf at Hawthorne Valley's private course Thursday morning (9 holes, scramble format )—\$40 including cart

**REGISTRATION:** [www.bepaconferenceo8.eventbrite.com](http://www.bepaconferenceo8.eventbrite.com) or call 216.235.4566

**CANCELLATIONS:** Must be received by Friday, August 1, for a refund. Substitutions allowed.



**BUSINESS  
EMERGENCY  
PLANNING  
ASSOCIATION**



## THURSDAY, AUGUST 14, 2008

### 8 a.m. – Noon

Opportunity to golf.

Register to enjoy 9 holes of golf at the exclusive Hawthorne Valley Country Club.

### 12:30 p.m. – 2:00 p.m.

Registration

Exhibits Open

**Buffet lunch**

### 2:00 p.m. – 4:30 p.m.

Tabletop Exercise

MARSH

### 4:30 p.m. – 7:00 p.m.

Networking and Exhibit

## FRIDAY, AUGUST 15, 2008

### 7:30 a.m. – 8:30 a.m.

Registration

Continental Breakfast

### 8:30 a.m. – 9:15 a.m.

**Keynote**

**Business Continuity: Security, Availability, Integrity and Emergency Planning**

**Fred Klapetzky, MARSH**

Fred Klapetzky is a Marsh Risk Consulting West Area Business Continuity Management Practice Leader responsible for working with Marsh global resources to develop and deliver business continuity management solutions to clients. Fred has been working in information systems design, operations and disaster recovery/business continuity since 1981.



He has performed technology and business continuity assessments/evaluations/planning for Financial Services, Manufacturing, Insurance, Health Care, Publishing, Retail, Telecommunications, Higher Education and e-commerce clients.

Fred was a pioneer in Computer Crime Investigations and helped develop many of the methods and techniques in use today by federal, state and local law enforcement. His security knowledge and capabilities make him uniquely qualified to assess and recommend improvements in facilities, networks and computing operations to ensure security, availability and data integrity.

### 9:30 a.m. – 10:30 a.m.

**TRACK A1**

**Business Continuity and Emergency Planning 101**

**Dr. Nancy Grant, University of Akron**

**Bruce Hennes, Hennes Communications**

Just starting to put together a business emergency plan? What's your next step? We'll help you get started or keep the process going.

**TRACK A2**

**Emergency Succession Planning—  
The Key to Organizational Success**

**Tom Tomasula, ERC**

Every organization has or will have a key leader exit the organization. Organizations lose and their future success is reduced by not being prepared for a key leader's termination. Two key questions must be asked. First are you prepared for an unplanned exit of a key leader in your organization? Second, what is your company doing to prepare for the continuation of business once a key leader leaves your organization? This session will support you in minding this aspect of your business by providing a financially-oriented perspective on the value of succession planning, as well as practical guidance in establishing a succession planning process that creates a foundation for your organization's long term success.

**TRACK A3**

**Organizational Business Continuity Certification**

**Brian Zawada, Avulation Consulting, LLC**

Business continuity professionals are spending increasing amounts of time evaluating organizational certification as a market differentiator and a method of reaching the next level in business continuity and maturity, including the recently-released BS25999 specifications and the emerging TIX initiative. Besides highlighting the benefits of organizational certification, we'll offer ways to discuss this opportunity with your executive management team and how to best prepare in a cost effective manner. Practical tips and real-world preparation techniques will also be offered.

### 11:00 a.m. – Noon

**TRACK B1**

**Government and Community Partners**

**John Blust, Cuyahoga County Emergency**

**Management Agency**

Do you know the role of the EMA in preparing for disasters? We'll discuss resources available from the EMA to help you develop you business emergency and continuity plan.

**TRACK B2**

**Emergency Response: How We Planned and  
What Really Happened**

**Rick Artino, Nestle Corp.**

This session will explore actual events that tested the emergency preparedness plan of a major food processor. Find out how we planned, what really happened and how we have adjusted our plans going forward.

**TRACK B3**

**Virtualization of the Server Environment**

**Fred Franks, FIT Technologies**

This seminar will discuss virtualization with Vmware, including how the technology works, what type of implementation can take place and what are the benefits, with emphasis on practical, real-world scenarios.

### 1:30 p.m. – 2:30 p.m.

**TRACK C1**

**Employee Theft: How to Keep It Out of Your Business**

**Virginia Davidson, Calfee, Halter & Griswold LLP**

Employee theft robs businesses of billions of dollars a year, primarily thorough check writing, deposit, cash skimming and false invoice schemes. Just a few statistics: Half of frauds are discovered by a fellow employee by accident; another third by internal whistleblowers; more than 80% of frauds are discovered from within, yet less than 10% of small businesses have anonymous fraud reporting systems or policies; and less than one fifth conduct surprise audits or anti-fraud training. This seminar will give you tools to combat employee theft and fraud.

**TRACK C2**

**Fire Awareness Training  
Cleveland State University**

Development of regulation-compliant and corporate specific emergency response plans is requisite to a company's ensuring employee and visitor safety, as well as business continuity, in the face of emergency situations in the workplace. But having plans in place does not ensure their effective implementation. In order for plans to work as intended, employees must know, understand, and be able to perform task as assigned by those plans. Such tasks include using fire extinguishers appropriately, performing as a "point of contact" for public sector emergency responders and knowing where critical utility shutoffs are located and how to operate them.

**TRACK C3**

**What Every Business Owner Needs  
to Know About the Security of their Data.**

**Jim Conley, Datacore Consulting**

This training session is designed for companies with 10 to 100 computer users and structured for non-technical attendees.

continues on back

Register today at [www.bepaconferenceo8.eventbrite.com](http://www.bepaconferenceo8.eventbrite.com)